

# EASY SERIES CONTROL RELAYS



PLCs and HMIs

**Easy Series  
Starts at  
£80**



## Easy Operation with Maximum Benefits

The Eaton easy control relays provide basic functions that users could only implement previously with individually installed and wired devices. The EZD multi-function displays offer powerful visualisation functions.

The EZ intelligent relays bring timers, relays, counters, special functions, inputs and outputs into one compact device that is easily configured. The EZ family of products provides exceptional levels of flexibility together with substantial savings in commissioning time and effort.

The EZ intelligent relays are available in more than 20 different styles that support from 12 I/O up to 320 I/O points providing the ideal solution for lighting, energy management, industrial control, watering, pump control, HVAC and home automation.

Once EZ products are installed, changes are easily accomplished through front panel programming, eliminating the need to change wiring and wiring diagrams increasing the savings realised.

Other terms often used for intelligent relay are relay replacer, control relay and smart relay.

## Simplicity and User-Friendly Operation

EZ and EZD products are known for their user-friendly operation and programming. Every rung or circuit connection is wired just like you remember: Contact – Contact – Contact – Coil – Done! The devices allow the “wiring” of 128 or 256 rungs or circuit connections. Series and parallel connections, which make up a major part of a control circuit, are easily created without previous programming knowledge. Ready-to-use function blocks are simply integrated in the wiring with coils, and contacts are provided for additional functions.

**EZ820-DC-RC, £258,**  
shown smaller than  
actual size.



**EZ719-DC-RC,**  
£146, shown  
smaller than  
actual size.



**EZ512-DC-RC,**  
£104, shown  
smaller than  
actual size.



**EZD-80-B, £84,**  
shown smaller  
than actual size.

Manufactured by Eaton for OMEGA



## Everything Needed is Built-In

Depending on the device selected, EZ and EZD products provide users with timing relays, flash relays, counters, comparators, timer switches and other ready-to-use functions. The circuit diagram display of serial and parallel connections, unlike the

display of AND and OR operations in a function block diagram, offers a more manageable display of the circuit. Every EZ and EZD intelligent relay features an integrated power flow display to ensure safe operation during commissioning and helps identify errors in the circuit diagram. For ease-of-use, energised rungs are highlighted, and non-energised rungs are dimmed.

## Security Means Safety

The finished circuit diagram is stored internally and can also be saved externally on a memory module (EEPROM) for transport, security and backup. Multi-level password protection secures your circuit diagram from unauthorised viewing, editing, copying or deleting.

**EZ500 Series**  
Starts at  
**£80**

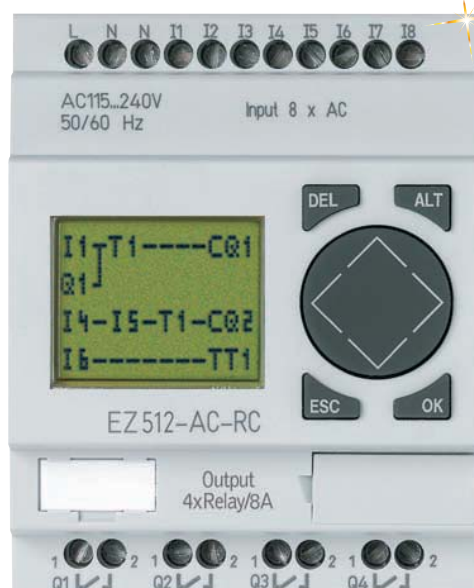
**EZ500 Series**— for controlling small applications with up to 12 input/output signals. Models are available with and without displays. DIN rail mounted.

- 8 Digital Inputs
- 4 Digital Inputs
- 128 Rungs of 3 Contacts and 1 Coil Each
- 16 Operating and Message Texts
- 2 Analogue Inputs (10-Bit) Optional (Not with 240 Vac)
- 2 High-Speed Inputs, 1 kHz (Only DC Devices)



**EZ512-DC-RC, £104, shown smaller than actual size.**

**EZ512-AC-RC, £104, shown smaller than actual size.**



## To Order (Specify Model Number)

## MOST POPULAR MODELS HIGHLIGHTED!

MODEL NO.	PRICE	DESCRIPTION	INPUTS					OUTPUTS
			24 Vac	110 to 240 Vac	12 Vdc	24 Vdc	ANALOGUE	RELAY
<b>EZ512-AC-R</b>	<b>£96</b>	12 I/O, no clock, display	—	8	—	—	—	4
<b>EZ512-AC-RC</b>	<b>104</b>	12 I/O, clock, display	—	8	—	—	—	4
<b>EZ512-AC-RCX</b>	<b>80</b>	12 I/O, clock, no display	—	8	—	—	—	4
<b>EZ512-DC-R</b>	<b>96</b>	12 I/O, no clock, display	—	—	—	8	2	4
<b>EZ512-DC-RC</b>	<b>104</b>	12 I/O, clock, display	—	—	—	8	2	4
<b>EZ512-DC-RCX</b>	<b>80</b>	12 I/O, clock, no display	—	—	—	8	2	4

Comes with complete installation guide.

Ordering Example: **EZ512-AC-RCX**, 12 I/O, clock, no display, **£80**.



**EZ700 Series**— for controlling medium-sized applications with up to 40 input/output signals. DIN rail mounted.

- 12 Digital Inputs
- 6 Digital Relay Outputs
- 128 Rungs of 3 Contacts and 1 Coil Each
- 16 Operating and Message Texts
- 4 Analogue Inputs (10-Bit) Optional (Not with 230 Vac)
- 2 High-Speed Inputs, 1 kHz (Only DC Devices)
- 1 Digital Expansion or Network Connection



**EZ719-DC-RC, £146, shown smaller than actual size.**

**EZ700 Series Starts at £125**

**EZ719-AC-RCX, £125, shown smaller than actual size.**



### To Order (Specify Model Number)

MODEL NO.	PRICE	DESCRIPTION	INPUTS					OUTPUTS
			24 Vac	110 to 240 Vac	12 Vdc	24 Vdc	ANALOGUE	RELAY
<b>EZ719-AC-RC</b>	<b>£146</b>	18 I/O, clock, display	—	12	—	—	—	6
<b>EZ719-AC-RCX</b>	<b>125</b>	18 I/O, clock, no display	—	12	—	—	—	6
<b>EZ719-DC-RC</b>	<b>146</b>	18 I/O, clock, display	—	—	—	12	4	6 170
<b>EZ719-DC-RCX</b>	<b>125</b>	18 I/O, clock, no display	—	—	—	12	4	6

Comes with complete installation guide. **Ordering Example: EZ719-AC-RCX, 18 I/O, clock, no display, £125.**

**EZ800 Series Starts at £202**

**EZ800 Series**— for controlling large scale applications with up to 320 input/output signals. Models are available with and without displays. DIN rail mounted.

- 12 Digital Inputs
- 6 Digital Relay Outputs
- 256 Rungs of 4 Contacts and 1 Coil Each
- 32 Operating and Message Texts
- 4 Analogue Inputs (10-Bit) Optional (Not with 230 Vac)
- 4 High-Speed Inputs, 3/5 kHz (Only DC Devices)
- 1 Digital Expansion or Network Connection
- Networkable via EZ-NET with Up to 8 Stations
- 1 Analogue Output (10 bit)



**EZ819-AC-RC, £231, shown smaller than actual size.**

### To Order (Specify Model Number)

MODEL NO.	PRICE	DESCRIPTION	INPUTS				OUTPUTS
			110 to 240 Vac	12 Vdc	ANALOGUE	RELAY	ANALOGUE
<b>EZ819-AC-RC</b>	<b>£231</b>	18 I/O, clock, display	12	—	—	6	—
<b>EZ819-AC-RCX</b>	<b>202</b>	18 I/O, clock, no display	12	—	—	6	—
<b>EZ819-DC-RC</b>	<b>231</b>	18 I/O, clock, display	—	12	4	6	—
<b>EZ819-DC-RCX</b>	<b>202</b>	18 I/O, clock, no display	—	12	4	6	—
<b>EZ820-DC-RC</b>	<b>258</b>	19 I/O, clock, display	—	12	4	6	1
<b>EZ820-DC-RCX</b>	<b>229</b>	19 I/O, clock, no display	—	12	4	6	1

Comes with complete installation guide. **Ordering Example: EZ819-DC-RCX, 18 I/O, clock, no display, £202.**



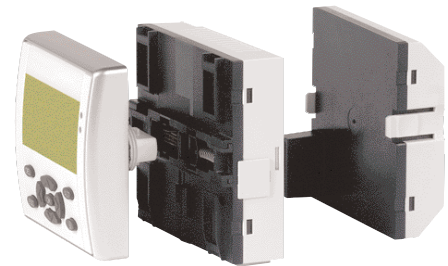


## EZD Modular Relays

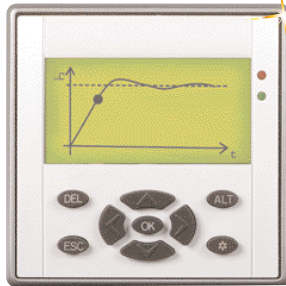
The EZD modular intelligent relays allows you to assemble a system to meet your exact requirements. A system consists of the following components:

1. EZD display with or without buttons
  2. CPU with or without clock; in a variety of power configurations
  3. I/O module
- 12 Digital Inputs
  - 4 Digital Relay Outputs
  - 256 Rungs of 4 Contacts and 1 Coil Each
  - 24 KB Mask Memory on a Fully Graphical, Backlit Display (64 x 132 Pixels)

- 4 Analogue Inputs (10-Bit) Optional (Not with 230 Vac)
- 4 High-Speed Inputs, 3/5 kHz (Only DC Devices)
- 1 Digital Expansion or Network Connection
- Networkable via EZ-NET with Up to 8 Stations
- 1 Analogue Output (10-Bit)



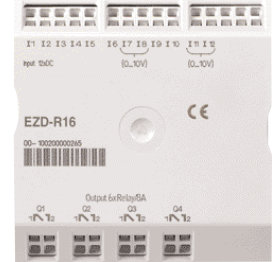
EZD Assembly. Display + CPU + I/O Module. Shown smaller than actual size.



EZD80-B, £84, shown smaller than actual size.



EZD-CP8-NT, £229, shown smaller than actual size.



EZD-R16, £80, shown smaller than actual size.

## EZD Displays and CPU/Power Supply

### To Order (Specify Model Number)

**AVAILABLE FOR FAST DELIVERY!**

MODEL NO.	PRICE	DESCRIPTION
EZD-80	£78	EZD display
EZD-80-B	84	EZD display with buttons
EZD-CP8-ME	190	EZD CPU with 24 Vdc, power supply, clock
EZD-CP8-NT	229	EZD CPU with 24 Vdc, power supply, clock, EZ-Net
EZD-AC-CP8-ME	190	EZD CPU with 100 to 240 Vac, power supply, clock
EZD-AC-CP8-NT	229	EZD CPU with 100 to 240 Vac, power supply, clock, EZ-Net

Comes with complete installation guide. **Ordering Example: EZD-80-B, EZD display with buttons, £78.**

## EZD Controller I/O Modules

MODEL NO.	PRICE	DESCRIPTION	INPUTS				OUTPUTS
			110 to 240 Vac	12 Vdc	ALG	RY	ALG
EZD-AC-R16	£80	16 I/O	12	—	—	4	—
EZD-R16	80	16 I/O	—	12	4	4	—
EZD-RA17	105	17 I/O	—	12	4	4	1

Comes with complete installation guide. **Ordering Example: EZD-RA17, 17 I/O, £105.**

MODEL	EZD-AC-R16	EZD-R16	EZD-RA17
SUPPLY VOLTAGE	Supply via EZD-CP8 module		
HEAT DISSIPATION	0.5 W	0.5 W	0.5 W
CONTINUOUS CURRENT OUTPUTS	8 A	8 A	8 A
CONNECTION CABLES	0.2 to 4.0 mm <sup>2</sup> (AWG 22-12), solid 0.2 to 2.5 mm <sup>2</sup> (AWG 22-12), flexible		
DEGREE OF PROTECTIONS	IP20	IP20	IP20
RFI SUPPRESSION	EN 55011, EN 55022 Class B, IEC 61000-6-1, 2, 3, 4		
AMBIENT OPERATING TEMPERATURE	-25 to 55°C	-25 to 55°C	-25 to 55°C
TRANSPORT AND STORAGE TEMPERATURE	-40 to 70°C	-40 to 70°C	-40 to 70°C
CERTIFICATION, STANDARDS	EN 50178, IEC/EN 60947, UL, CSA		
MOUNTING	Snap fitted to EZD-CP8 module		

Starts at  
**£35**

## EXPANSION MODULES



Expansion modules are available for increasing the input/output of the EZ700/800 and EZD intelligent relays to 24 inputs and up to 16 outputs. Expansion modules can be mounted directly to the EZ/EZD unit.

**EZ618-DC-RE, £102, shown connected to EZ820-DC-RC, £258 (see page 599), shown smaller than actual size.**

### To Order (Specify Model Number)

**AVAILABLE FOR FAST DELIVERY!**

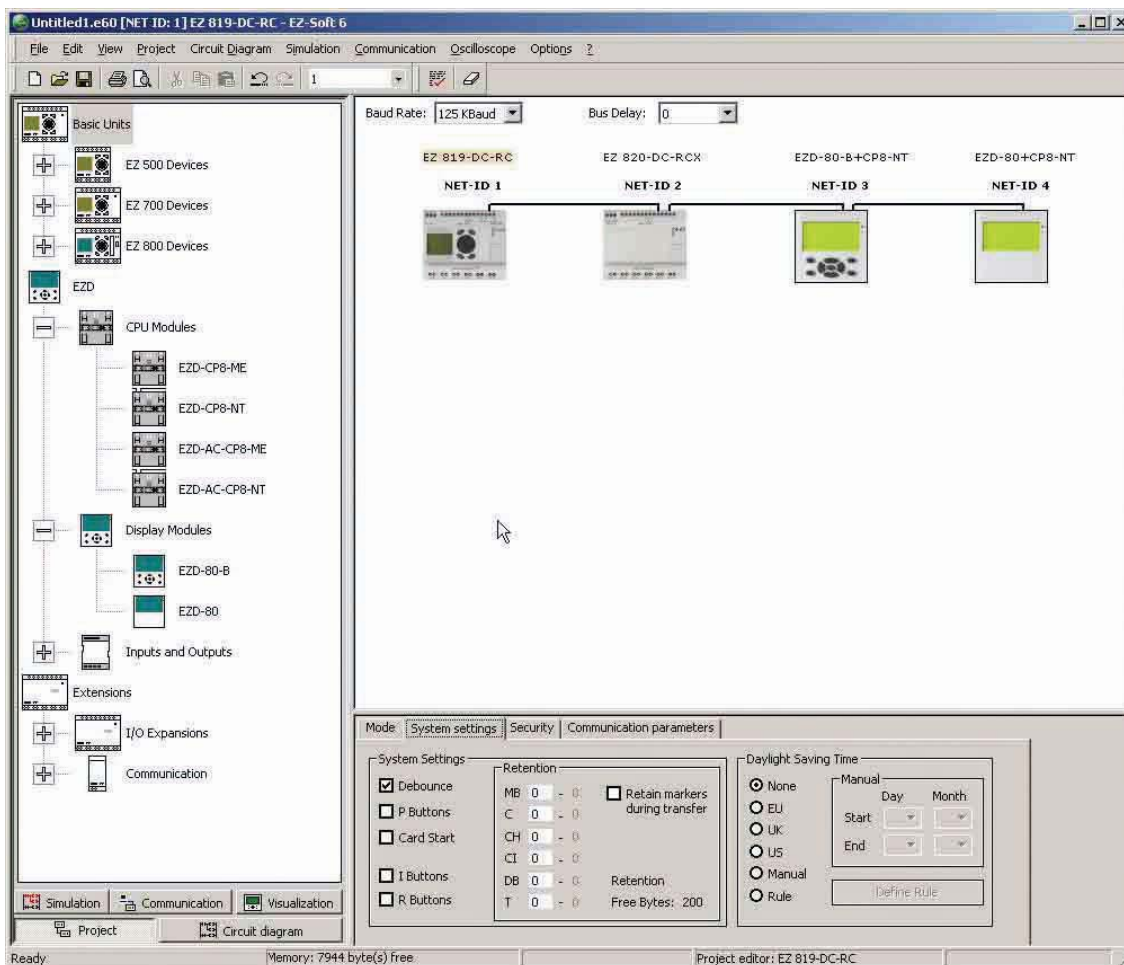
MODEL NO.	PRICE	DESCRIPTION	INPUTS		OUTPUTS
			110 to 240 Vac	12 Vdc	RELAY
<b>EZ202-RE</b>	<b>£35</b>	2 I/O expansion	—	—	2
<b>EZ618-AC-RE</b>	<b>102</b>	18 I/O expansion	12	—	6
<b>EZ618-DC-RE</b>	<b>102</b>	18 I/O expansion	—	12	6

Comes with installation guide and EZ-LINK-DS to connect expansion module to intelligent relay.  
**Ordering Example: EZ618-AC-RE, 18 I/O expansion, £102.**

### Accessories

MODEL NO.	PRICE	DESCRIPTION
<b>EZ-PC-CAB</b>	<b>£37.50</b>	EZ500/700 to PC cable
<b>EZ800-PC-CAB</b>	<b>55.00</b>	EZ800/EZD to PC cable
<b>EZ200-POW</b>	<b>27.50</b>	Power supply, 100-240 Vac input to 24 Vdc at 250 mA
<b>EZ400-POW</b>	<b>44.50</b>	Power supply, 100-240 Vac input to 24 Vdc at 1.25 A
<b>EZ-M-32K</b>	<b>14.75</b>	EZ500/700 32 K program storage module
<b>EZ-M-256K</b>	<b>22.00</b>	EZ800/EZD 256 K program storage module

MODEL	EZ202-RE	EZ618-AC-RE	EZ618-DC-RE
SUPPLY VOLTAGE	—	100 to 240 Vac	24 Vac
HEAT DISSIPATION	1 W	10 VA	4 W
CONTINUOUS CURRENT OUTPUTS	8 A	8 A	8 A
CONNECTION CABLES	0.2 to 4.0 mm <sup>2</sup> (AWG 22-12), solid 0.2 to 2.5 mm <sup>2</sup> (AWG 22-12), flexible		
DEGREE OF PROTECTIONS	IP 20	IP 20	IP 20
RFI SUPPRESSION	EN 55011, EN 55022 Class B, IEC 61000-6-1,2,3,4		
AMBIENT OPERATING TEMPERATURE	-25 to 55°C	-25 to 55°C	-25 to 55°C
TRANSPORT AND STORAGE TEMPERATURE	-40 to 70°C	-40 to 70°C	-40 to 70°C
CERTIFICATION, STANDARDS	EN 50178, IEC/EN 60947, UL, CSA		
MOUNTING	On top-hat rail to DIN 50022, 35 mm or screw mounting with EZB4-101-GF1 fixing brackets		



## EZSoft User-Friendly Circuit Diagram Editor

EZSoft makes things particularly easy for users. The graphical editor shows the circuit diagram immediately in the display format required. Selection menus and drag & drop functions simplify circuit diagram creation. Simply select contacts and coils and connect with the mouse – that's it! In addition to the editing functions, EZSoft is available for straightforward circuit diagram input. All software includes user-friendly menus and Help screens. EZSoft offers the following display formats for viewing, editing and printing out your program:

- IEC format, with contact and coil symbols using international standards
- EZ circuit diagram, same as what is seen when programming from the EZ front panel
- ANSI format, in compliance with American standards

EZSoft supports users who are configuring, programming and defining parameters for EZ intelligent relays and creating visualisation functions for E2D displays. When intelligent relays are connected to EZ-NET, all connected devices can be accessed and their programs loaded from a single intelligent relay. The integrated offline simulation tool allows users to test the functionality of the circuit diagram before commissioning, without the need for a connected device. The comment function for contacts, coils and function blocks helps provide a clear overview of the circuit diagram. A cover sheet with a customised company logo and different text fields, as well as the cross-reference list with comments, can turn printouts into the perfect documentation for applications.

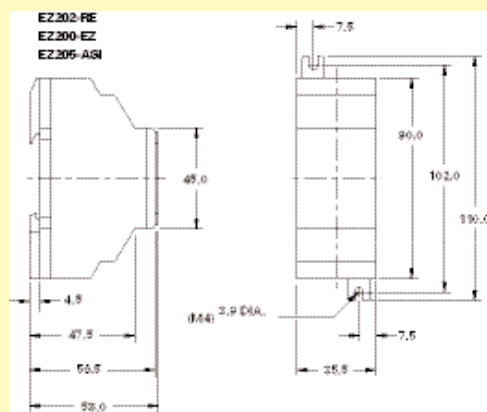
## EZ is Maintenance-Free

The finished program is stored in EZ's non-volatile memory until modified. Additional auxiliary power or batteries are not required. The intelligent relays are entirely maintenance-free. Circuit diagrams and parameters are saved in the event of a power failure. If a power failure occurs, the EZ controller stores switch positions and values such as operating hours, metres, counters and timing relays. When power is restored the values are restored. This retentive feature for the different function blocks and data is available on all EZ intelligent relay models.

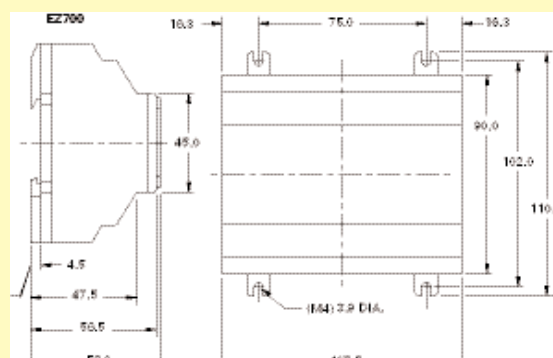
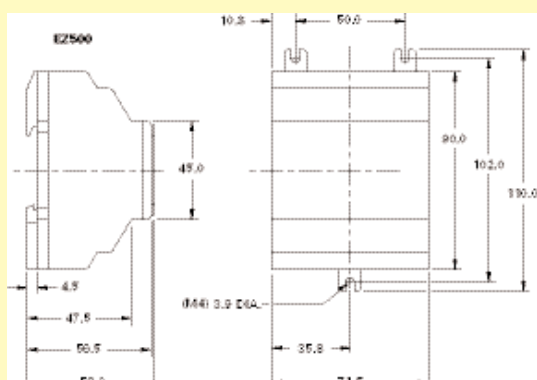
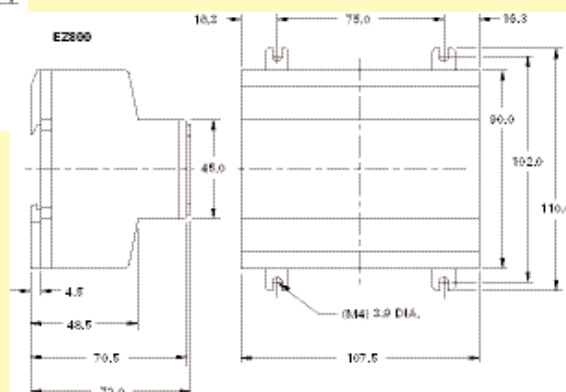
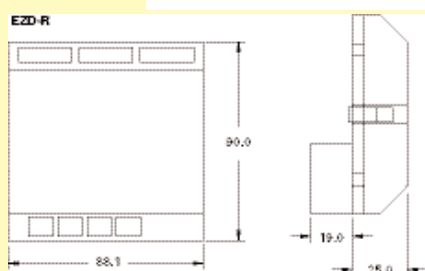
### To Order (Specify Model Number)

### IN STOCK FOR FAST DELIVERY!

MODEL NO.	PRICE	DESCRIPTION
EZSOFT	£131	Programming software for EZ500/700/800 and E2D

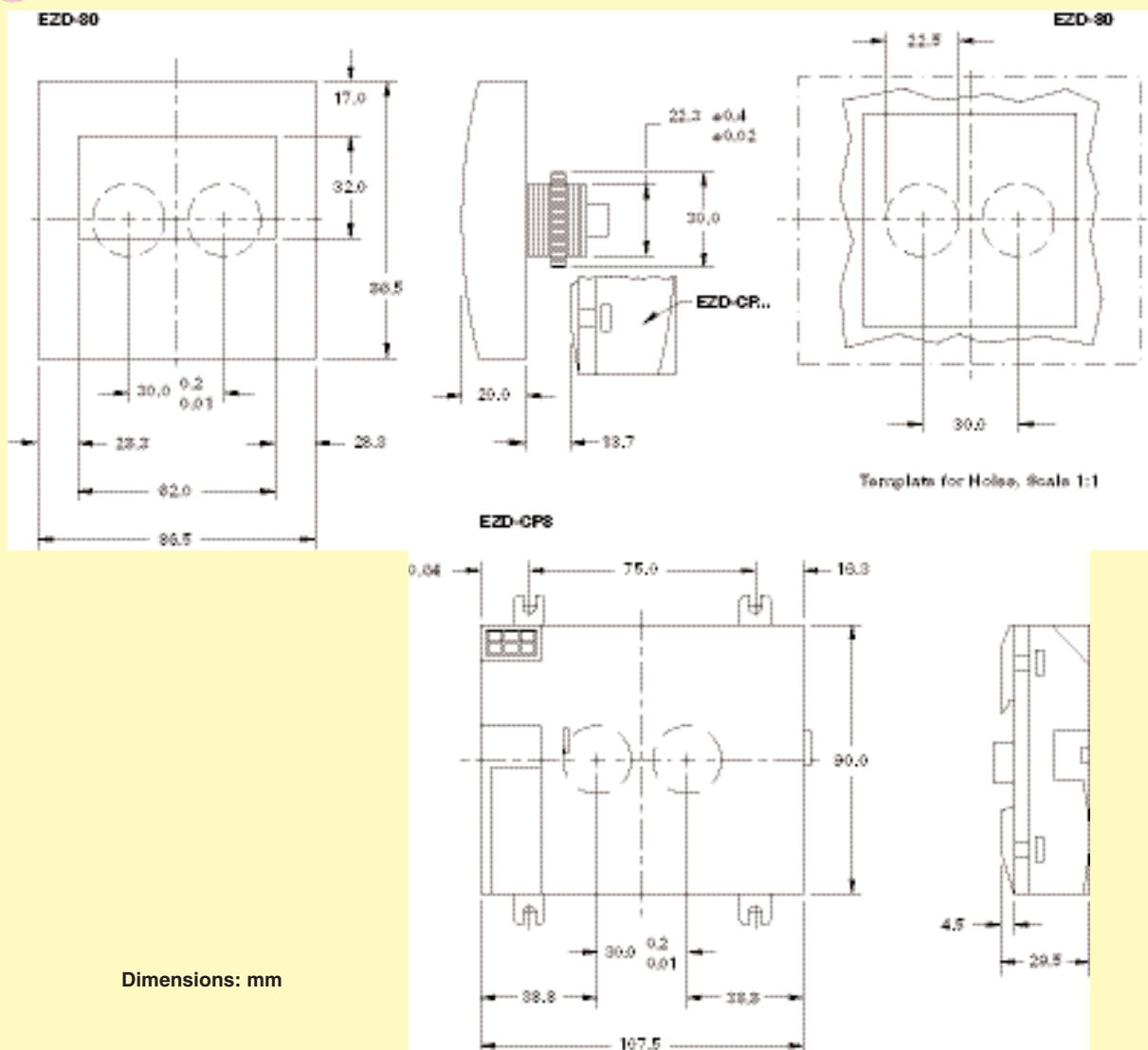


Dimensions: mm



### EZ500, EZ700 and EZ800 Series

MODEL NO.	EZ512-AC	EZ512-DC-R	EZ719-AC	EZ719-DC-RC	EZ819-AC	EZ819-DC-RC
SUPPLY VOLTAGE	100 to 240 Vac	24 Vdc	100 to 240 Vac	24 Vdc	100 to 240 Vac	24 Vdc
HEAT DISSIPATION	5 VA	2 W	10 VA	3.5 W	10 VA	3.4 W
CONTINUOUS CURRENT OUTPUTS (1)	8 A	8 A	8 A	8 A	8 A	8 A
MOUNTING	On top-hat rail to DIN 50022, 35 mm or screw mounting with EZB4-101-GF1 fixing brackets					
CONNECTION CABLES	0.2 to 4.0 mm <sup>2</sup> (AWG 22-12), solid 0.2 to 2.5 mm <sup>2</sup> (AWG 22-12), flexible					
DEGREE OF PROTECTIONS	IP 20					
RFI SUPPRESSION	EN 55011, EN 55022 Class B, IEC 61000-6-1, 2, 3, 4					
AMBIENT OPERATING TEMPERATURE	-25 to 55°C					
TRANSPORT AND STORAGE TEMPERATURE	-40 to 70°C					
CERTIFICATION, STANDARDS	EN 50178, IEC/EN 60947, UL, CSA, Class 1, Div 2					



#### ESD Displays (ESD-80 and ESD-80B)

SUPPLY VOLTAGE	Supply from ESD-CP8
HEAT DISSIPATION	3 W
MOUNTING	Front Mounting in 2 x 22.5 mm Standard Drill Holes
DEGREE OF PROTECTIONS	IP65
RFI SUPPRESSION	EN 55011, EN 55022 Class B, IEC 61000-6-1, 2, 3, 4
AMBIENT OPERATING TEMPERATURE	Clearly Legible at -5 to 50°C
TRANSPORT AND STORAGE TEMPERATURE	-40 to 70°C
CERTIFICATION, STANDARDS	EN 50178, IEC/EN 60947, UL, CSA, Class 1, Div 2

#### ESD CPU/Power Supply Module

MODEL	ESD-CP8	ESD-AC-CP8
SUPPLY VOLTAGE	24 Vdc	100 to 240 Vac
HEAT DISSIPATION	3 W	8 VA
MOUNTING	Snap fitted to ESD-80 or on top-hat rail to DIN 50022, 35 mm or screw mounting with EZB4-101-GF1 fixing brackets	



# omega.co.uk®

Your One-Stop Source for Process Measurement and Control!

Freephone 0800 488 488 | International +44(0) 161 777 6622 | Fax +44(0) 161 777 6622 | Sales@omega.co.uk

**www.omega.co.uk**



## UNITED STATES

[www.omega.com](http://www.omega.com)

1-800-TC-OMEGA

Stamford, CT.

## CANADA

[www.omega.ca](http://www.omega.ca)

Laval(Quebec)

1-800-TC-OMEGA

## GERMANY

[www.omega.de](http://www.omega.de)

Deckenpfronn, Germany

0800-8266342

## UNITED KINGDOM

[www.omega.co.uk](http://www.omega.co.uk)

Manchester, England

0800-488-488

## FRANCE

[www.omega.fr](http://www.omega.fr)

088-466-342

## CZECH REPUBLIC

[www.omegaeng.cz](http://www.omegaeng.cz)

Karviná, Czech Republic

596-311-899

## BENELUX

[www.omega.nl](http://www.omega.nl)

0800-099-33-44



## More than 100,000 Products Available!

### • Temperature

Calibrators, Connectors, General Test and Measurement Instruments, Handheld Instruments for Temperature Measurement, Ice Point References, Indicating Labels, Crayons, Cements and Lacquers, Infrared Temperature Measurement Instruments, Recorders, Relative Humidity Measurement Instruments, PT100 Probes, PT100 Elements, Temperature & Process Meters, Timers and Counters, Temperature and Process Controllers and Power Switching Devices, Thermistor Elements, Probes and Assemblies, Thermocouples, Thermowells and Head and Well Assemblies, Transmitters, Thermocouple Wire, RTD Probes

### • Flow and Level

Air Velocity Indicators, Doppler Flowmeters, Level Measurement, Magnetic Flowmeters, Mass Flowmeters, Pitot Tubes, Pumps, Rotameters, Turbine and Paddle Wheel Flowmeters, Ultrasonic Flowmeters, Valves, Variable Area Flowmeters, Vortex Shedding Flowmeters

### • pH and Conductivity

Conductivity Instrumentation, Dissolved Oxygen Instrumentation, Environmental Instrumentation, pH Electrodes and Instruments, Water and Soil Analysis Instrumentation

### • Data Acquisition

Auto-Dialers and Alarm Monitoring Systems, Communication Products and Converters, Data Acquisition and Analysis Software, Data Loggers Plug-in Cards, Signal Conditioners, USB, RS232, RS485 and Parallel Port Data Acquisition Systems, Wireless Transmitters and Receivers

### • Pressure, Strain and Force

Displacement Transducers, Dynamic Measurement Force Sensors, Instrumentation for Pressure and Strain Measurements, Load Cells, Pressure Gauges, Pressure Reference Section, Pressure Switches, Pressure Transducers, Proximity Transducers, Regulators, Pressure Transmitters, Strain Gauges, Torque Transducers, Valves

### • Heaters

Band Heaters, Cartridge Heaters, Circulation Heaters, Comfort Heaters, Controllers, Meters and Switching Devices, Flexible Heaters, General Test and Measurement Instruments, Heater Hook-up Wire, Heating Cable Systems, Immersion Heaters, Process Air and Duct, Heaters, Radiant Heaters, Strip Heaters, Tubular Heaters