

8-Channel Voltage Data Loggers Part of the NOMAD® Family

OM-CP-OCTVOLT



- ✓ 16-Bit Resolution
- ✓ Programmable Engineering Units, Scale Factor, and Offset Value
- ✓ Memory Wrap-Around
- ✓ User Calibration Through Software
- ✓ Real-Time Operation

The OM-CP-OCTVOLT Series is comprised of low-cost, high-resolution, miniature, battery-powered, standalone voltage input data loggers. In addition, the OM-CP-OCTVOLT allows the user to store predefined engineering units into the device, as well as scale factors and offset values. This lets the user easily linearize and scale a transducer that provides a voltage—automatically and in any user-required units. This capability is ideal for scaling a voltage output. The portable, easy to use

OM-CP-OCTVOLT will read and record up to 16,383 voltage measurements per channel.

The OM-CP-OCTVOLT represents a major leap in both size and performance. Its real-time clock ensures that all data is time and date stamped. The storage medium is non-volatile solid state memory, providing maximum data security even if the battery becomes discharged. The device's small size allows it to fit almost anywhere.



OM-CP-OCTVOLT shown actual size.

Data retrieval is simple. Plug the device into an available COM port and our easy-to-use software does the rest. The software converts a PC into a real-time strip chart recorder. Data can be printed in graphical and tabular format or exported to a text or Microsoft Excel file.

Specifications

Input Channels: 8

Memory: 16,383 readings/channel

Input Connection:
Removable screw terminal

ADC Resolution: 16-bits

Voltage Calibration: Digital calibration is available in software

Calibration Date: Automatically recorded within device to alert user when calibration is required

Recording Interval: 1 second to 12 hours selectable in software

Start Time: Start time and date are programmable through software

Memory Wraparound:
Selectable in software

Real-Time Recording: Device can be used with PC to monitor and record data in real-time

Time Accuracy:
±1 minute per month at 20°C

Power: 9V lithium battery (included); 120 Vac power optional

Battery Life: 1 year typical

Data Format: Date and time stamped; μ V, mV, V and other engineering units programmable through software

Computer Interface:
PC serial, RS232C COM or USB (interface cable required); 2400 baud

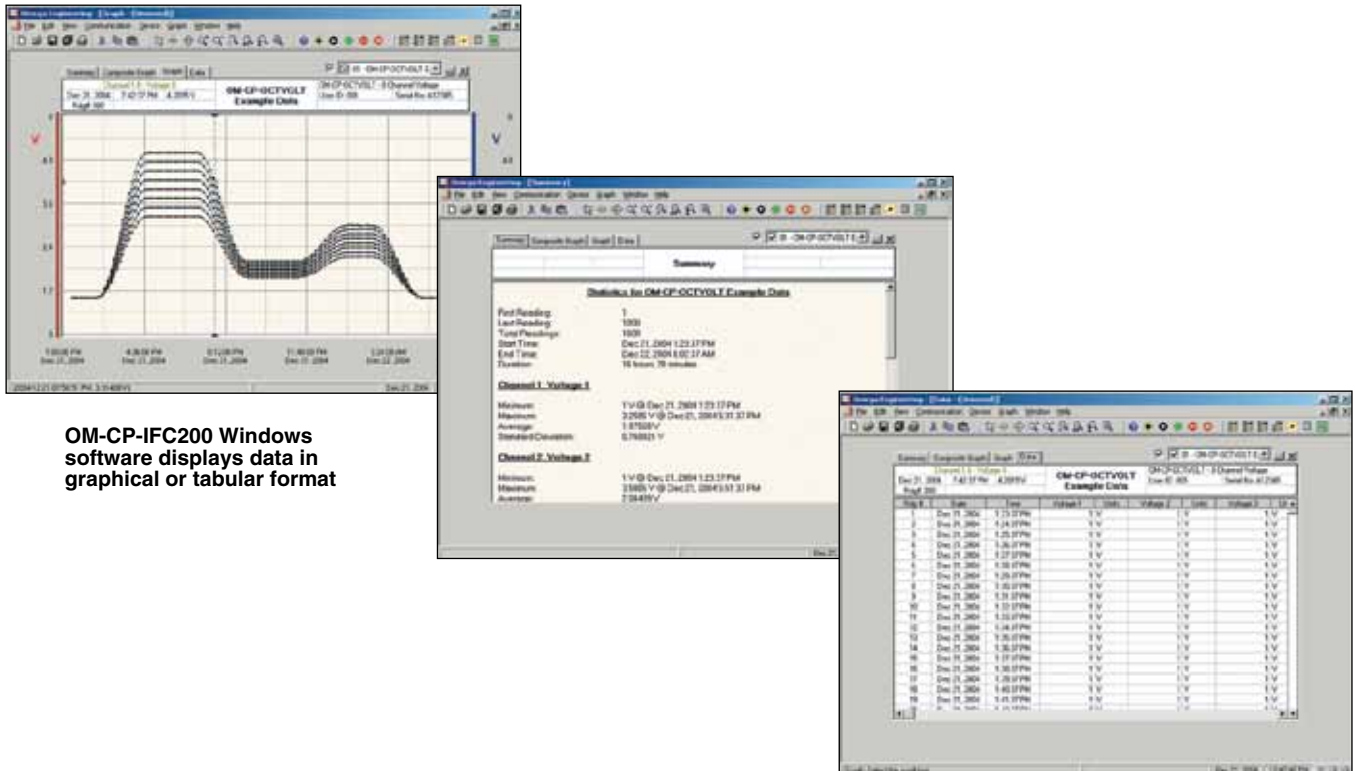
Software: XP SP3/Vista/7 and 8 (32-bit and 64-bit)

Operating Environment:
-20 to 60°C (-4 to 140°F)
0 to 95% RH non-condensing

Dimensions:
39 D x 112 L x 89 mm W
(1.5 x 4.4 x 3.5")

Weight: 480 g (17 oz)

Material: Black anodized aluminum



OM-CP-IFC200 Windows software displays data in graphical or tabular format

INPUT RANGES	OM-CP-OCTVOLT-100MV	OM-CP-OCTVOLT-2.5V	OM-CP-OCTVOLT	OM-CP-OCTVOLT-30V
Nominal Input Range	±100 mV	0 to 2.5 V	0 to 15 V	0 to 30
Measurement Range	±150 mV	-0.25 to 2.75 V	-1.0 to 16.0 V	-2.0 to 32.0 V
Resolution	5 µV	0.1 mV	0.5 mV	1.0 mV
Accuracy	±0.01% FSR	±0.01% FSR	±0.1% FSR	±0.1% FSR
Input Impedance	>1 KΩ*	>1 KΩ*	>10 KΩ	>10 KΩ
Overload Protection	±5 V	±5 V	±30 V	±48 V

* >1 MΩ during acquisition.

To Order Visit omega.com/om-cp-octvolt for Pricing and Details

Model No.	Description
OM-CP-OCTVOLT	8-channel voltage data logger, 15V input range
OM-CP-OCTVOLT-CERT	8-channel voltage data logger, 15V input range with NIST calibration certificate
OM-CP-OCTVOLT-100MV	8-channel voltage data logger, ±100 mV input range
OM-CP-OCTVOLT-100MV-CERT	8-channel voltage data logger, ±100 mV input range with NIST calibration certificate
OM-CP-OCTVOLT-2.5V	8-channel voltage data logger, 2.5V input range
OM-CP-OCTVOLT-2.5V-CERT	8-channel voltage data logger, 2.5V input range with NIST calibration certificate
OM-CP-OCTVOLT-30V	8-channel voltage data logger, 30V input range
OM-CP-OCTVOLT-30V-CERT	8-channel voltage data logger, 30V input range with NIST calibration certificate
OM-CP-IFC200	Windows software and 1.8 m (6') USB interface cable
OM-CP-BAT103	Replacement 9V lithium battery
OM-CP-CONNECTOR-2	Replacement 2 position terminal block connector for the OM-CP-OCTVOLT, OM-CP-OCTVOLT-2.5V, and OM-CP-OCTVOLT-30V
OM-CP-CONNECTOR-3	Replacement 2 position terminal block connector for the OM-CP-OCTVOLT-100MV

Comes complete with 9V lithium battery.

Operator's manual and USB cable are included with the **OM-CP-IFC200** Windows software, (required to operate the data logger and sold separately). To order data loggers with optional 120 Vac power, add suffix "-AC" to model number for additional cost.

Ordering Example: **OM-CP-OCTVOLT-CERT** 8-channel voltage data logger with NIST calibration certificate and **OM-CP-IFC200** Windows software with USB interface cable.

omega.co.uk®

Your One-Stop Source for Process Measurement and Control!

Freephone 0800 488 488 | International +44(0) 161 777 6622 | Fax +44(0) 161 777 6622 | Sales@omega.co.uk

www.omega.co.uk



UNITED STATES

www.omega.com

1-800-TC-OMEGA
Stamford, CT.

UNITED KINGDOM

www.omega.co.uk

Manchester, England
0800-488-488
+44-(0)161-777-6611

CANADA

www.omega.ca

Laval(Quebec)
1-800-TC-OMEGA

FRANCE

www.omega.fr

0800-466-342

GERMANY

www.omega.de

Deckenfronn, Germany
0800-8266342

BENELUX

www.omega.nl

0800-099-33-44



More than 100,000 Products Available!

• Temperature

Calibrators, Connectors, General Test and Measurement Instruments, Handheld Instruments for Temperature Measurement, Ice Point References, Indicating Labels, Crayons, Cements and Lacquers, Infrared Temperature Measurement Instruments, Recorders, Relative Humidity Measurement Instruments, PT100 Probes, PT100 Elements, Temperature & Process Meters, Timers and Counters, Temperature and Process Controllers and Power Switching Devices, Thermistor Elements, Probes and Assemblies, Thermocouples, Thermowells and Head and Well Assemblies, Transmitters, Thermocouple Wire, RTD Probes

• Flow and Level

Air Velocity Indicators, Doppler Flowmeters, Level Measurement, Magnetic Flowmeters, Mass Flowmeters, Pitot Tubes, Pumps, Rotameters, Turbine and Paddle Wheel Flowmeters, Ultrasonic Flowmeters, Valves, Variable Area Flowmeters, Vortex Shedding Flowmeters

• pH and Conductivity

Conductivity Instrumentation, Dissolved Oxygen Instrumentation, Environmental Instrumentation, pH Electrodes and Instruments, Water and Soil Analysis Instrumentation

• Data Acquisition

Communication Products and Converters, Data Acquisition and Analysis Software, Data Loggers Plug-in Cards, Signal Conditioners, USB, RS232, RS485, Ethernet and Parallel Port Data Acquisition Systems, Wireless Transmitters and Receivers

• Pressure, Strain and Force

Displacement Transducers, Dynamic Measurement Force Sensors, Instrumentation for Pressure and Strain Measurements, Load Cells, Pressure Gauges, Pressure Reference Section, Pressure Switches, Pressure Transducers, Proximity Transducers, Regulators, Pressure Transmitters, Strain Gauges, Torque Transducers, Valves

• Heaters

Band Heaters, Cartridge Heaters, Circulation Heaters, Comfort Heaters, Controllers, Meters and Switching Devices, Flexible Heaters, General Test and Measurement Instruments, Heater Hook-up Wire, Heating Cable Systems, Immersion Heaters, Process Air and Duct, Heaters, Radiant Heaters, Strip Heaters, Tubular Heaters