

4-Channel Voltage Data Loggers

Part of the **NOMAD®** Family

OM-CP-QUADVOLT



- ✓ 16-Bit Resolution
- ✓ Programmable Engineering Units, Scale Factor and Offset Value
- ✓ Memory Wrap Around
- ✓ Miniature Size
- ✓ User Calibration Through Software
- ✓ Real Time Operation

The OM-CP-QUADVOLT are low cost, high resolution, miniature battery powered, stand-alone voltage input data loggers. In addition, the OM-CP-QUADVOLT allows the user to store user defined engineering units into the device as well as scale factors and offset values. This enables the user to easily linearize and scale any transducer that provides a voltage to any user required units automatically.

This all-in-one compact, portable, easy-to-use device will measure and record up to 32,768 voltage measurements per channel. The OM-CP-QUADVOLT is a major leap forward in both size and performance. Its real time clock ensures that all data is time and date stamped. The storage medium is non-volatile solid state memory, providing maximum data security even if the battery becomes discharged. Its small size allows it to fit almost anywhere.

Data retrieval is simple. Plug it into an available COM port and our easy to use software does the rest. The software converts your PC into a real time strip chart recorder. Data can be printed in graphical or tabular format and can be exported to a text or Microsoft Excel file.

Specifications

Input Channels: 4

Memory: 32,768 readings/channel

Input Connection:

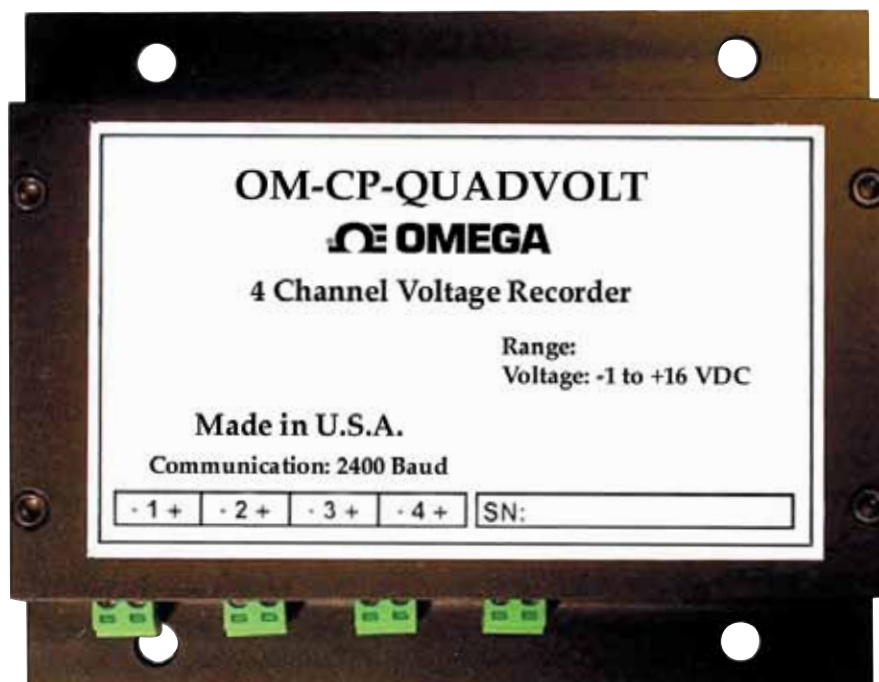
Removable screw terminal

Input Impedance: >10 K Ω

ADC Resolution: 16 bits

Voltage Calibration: Digital

calibration is available in software



OM-CP-QUADVOLT data logger shown larger than actual size

Calibration Date: Automatically recorded within device to alert user when calibration is required

Recording Interval: 1 second to 12 hours selectable in software

Start Time: Start time and date are programmable through software

Memory Wrap Around: Selectable in software

Real Time Recording: Device may be used with PC to monitor and record data in real time

Power: 9V lithium battery (included); 120 Vac power optional

Battery Life: 1 year typical

Time Accuracy:

± 1 minute per month at 20°C

Data Format: Date and time stamped, μ V, mV, V and other engineering units programmable through software

Computer Interface:

PC serial, RS-232C COM or USB (interface cable required); 2400 baud

Software: XP SP3/Vista/7 and 8 (32-bit and 64-bit)

Operating Environment:

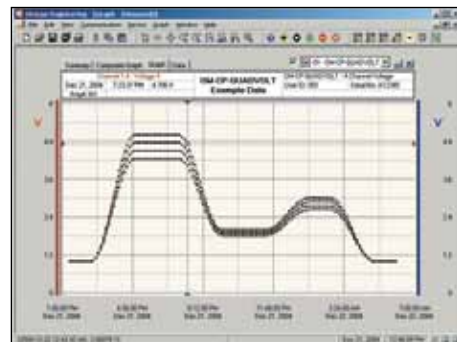
-20 to 60°C (-4 to 140°F)

0 to 95% RH non-condensing

Dimensions: 26 D x 111 L x 89 mm W (1.0 x 4.4 x 3.5")

Weight: 370 g (13 oz)

Material: Black anodized aluminum



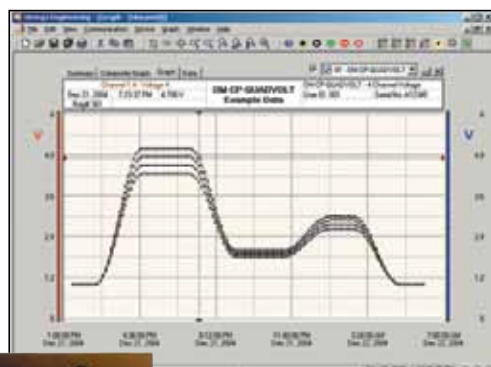
Date	Time	Channel 1	Channel 2	Channel 3	Channel 4
Nov 27, 2008	11:00:00	1.000	1.000	1.000	1.000
Nov 27, 2008	11:00:01	1.000	1.000	1.000	1.000
Nov 27, 2008	11:00:02	1.000	1.000	1.000	1.000
Nov 27, 2008	11:00:03	1.000	1.000	1.000	1.000
Nov 27, 2008	11:00:04	1.000	1.000	1.000	1.000
Nov 27, 2008	11:00:05	1.000	1.000	1.000	1.000
Nov 27, 2008	11:00:06	1.000	1.000	1.000	1.000
Nov 27, 2008	11:00:07	1.000	1.000	1.000	1.000
Nov 27, 2008	11:00:08	1.000	1.000	1.000	1.000
Nov 27, 2008	11:00:09	1.000	1.000	1.000	1.000
Nov 27, 2008	11:00:10	1.000	1.000	1.000	1.000
Nov 27, 2008	11:00:11	1.000	1.000	1.000	1.000
Nov 27, 2008	11:00:12	1.000	1.000	1.000	1.000
Nov 27, 2008	11:00:13	1.000	1.000	1.000	1.000
Nov 27, 2008	11:00:14	1.000	1.000	1.000	1.000
Nov 27, 2008	11:00:15	1.000	1.000	1.000	1.000
Nov 27, 2008	11:00:16	1.000	1.000	1.000	1.000
Nov 27, 2008	11:00:17	1.000	1.000	1.000	1.000
Nov 27, 2008	11:00:18	1.000	1.000	1.000	1.000
Nov 27, 2008	11:00:19	1.000	1.000	1.000	1.000
Nov 27, 2008	11:00:20	1.000	1.000	1.000	1.000
Nov 27, 2008	11:00:21	1.000	1.000	1.000	1.000
Nov 27, 2008	11:00:22	1.000	1.000	1.000	1.000
Nov 27, 2008	11:00:23	1.000	1.000	1.000	1.000
Nov 27, 2008	11:00:24	1.000	1.000	1.000	1.000
Nov 27, 2008	11:00:25	1.000	1.000	1.000	1.000
Nov 27, 2008	11:00:26	1.000	1.000	1.000	1.000
Nov 27, 2008	11:00:27	1.000	1.000	1.000	1.000
Nov 27, 2008	11:00:28	1.000	1.000	1.000	1.000
Nov 27, 2008	11:00:29	1.000	1.000	1.000	1.000
Nov 27, 2008	11:00:30	1.000	1.000	1.000	1.000
Nov 27, 2008	11:00:31	1.000	1.000	1.000	1.000
Nov 27, 2008	11:00:32	1.000	1.000	1.000	1.000
Nov 27, 2008	11:00:33	1.000	1.000	1.000	1.000
Nov 27, 2008	11:00:34	1.000	1.000	1.000	1.000
Nov 27, 2008	11:00:35	1.000	1.000	1.000	1.000
Nov 27, 2008	11:00:36	1.000	1.000	1.000	1.000
Nov 27, 2008	11:00:37	1.000	1.000	1.000	1.000
Nov 27, 2008	11:00:38	1.000	1.000	1.000	1.000
Nov 27, 2008	11:00:39	1.000	1.000	1.000	1.000
Nov 27, 2008	11:00:40	1.000	1.000	1.000	1.000
Nov 27, 2008	11:00:41	1.000	1.000	1.000	1.000
Nov 27, 2008	11:00:42	1.000	1.000	1.000	1.000
Nov 27, 2008	11:00:43	1.000	1.000	1.000	1.000
Nov 27, 2008	11:00:44	1.000	1.000	1.000	1.000
Nov 27, 2008	11:00:45	1.000	1.000	1.000	1.000
Nov 27, 2008	11:00:46	1.000	1.000	1.000	1.000
Nov 27, 2008	11:00:47	1.000	1.000	1.000	1.000
Nov 27, 2008	11:00:48	1.000	1.000	1.000	1.000
Nov 27, 2008	11:00:49	1.000	1.000	1.000	1.000
Nov 27, 2008	11:00:50	1.000	1.000	1.000	1.000
Nov 27, 2008	11:00:51	1.000	1.000	1.000	1.000
Nov 27, 2008	11:00:52	1.000	1.000	1.000	1.000
Nov 27, 2008	11:00:53	1.000	1.000	1.000	1.000
Nov 27, 2008	11:00:54	1.000	1.000	1.000	1.000
Nov 27, 2008	11:00:55	1.000	1.000	1.000	1.000
Nov 27, 2008	11:00:56	1.000	1.000	1.000	1.000
Nov 27, 2008	11:00:57	1.000	1.000	1.000	1.000
Nov 27, 2008	11:00:58	1.000	1.000	1.000	1.000
Nov 27, 2008	11:00:59	1.000	1.000	1.000	1.000
Nov 27, 2008	11:01:00	1.000	1.000	1.000	1.000



OM-CP-IFC200 Windows software displays data in graphical or tabular format

INPUT RANGES	OM-CP-QUADVOLT-100MV	OM-CP-QUADVOLT-2.5V	OM-CP-QUADVOLT	OM-CP-QUADVOLT-30V
Nominal Input Range	±100 mV	0 to 2.5V	0 to 15 V	0 to 30
Measurement Range	±150 mV	-0.25 to 2.75 V	-1.0 to 16.0 V	-2.0 to 32.0 V
Resolution	5 μ V	0.1 mV	0.5 mV	1.0 mV
Accuracy	±0.01% FSR	±0.01% FSR	±0.1% FSR	±0.1% FSR
Input Impedance	>1 K Ω *	>1 K Ω *	>10 K Ω	>10 K Ω
Overload Protection	±5 V	±5 V	±30 V	±48 V

* >1M Ω during acquisition



The figure shows a tabular representation of data from an OM-CP-QUADVOLT data logger. It displays a multi-channel voltage waveform over time. The table has columns for 'Time', 'Channel 1', 'Channel 2', 'Channel 3', and 'Channel 4'. The data is organized into rows, with each row representing a specific time point. The title of the table is 'OM-CP-QUADVOLT Example Data'.



OM-CP-QUADVOLT data logger shown smaller than actual size



OM-CP-IFC200 Windows software displays data in graphical or tabular format

To Order

Model No.	Description
OM-CP-QUADVOLT	4-channel voltage data logger, 15V input range
OM-CP-QUADVOLT-CERT	4-channel voltage data logger, 15V input range with NIST calibration certificate
OM-CP-QUADVOLT-2.5V	4-channel voltage data logger, 2.5V input range
OM-CP-QUADVOLT-2.5V-CERT	4-channel voltage data logger, 2.5V input range with NIST calibration certificate
OM-CP-QUADVOLT-30V	4-channel voltage data logger, 30V input range
OM-CP-QUADVOLT-30V-CERT	4-channel voltage data logger, 30V input range with NIST calibration certificate
OM-CP-QUADVOLT-100MV	4-channel voltage data logger, ±100 mV input range
OM-CP-QUADVOLT-100MV-CERT	4-channel voltage data logger, ±100 mV input range with NIST calibration certificate
OM-CP-IFC200	Windows software and 1.8 m (6') USB interface cable
OM-CP-BAT103	Replacement 9V lithium battery
OM-CP-CONNECTOR-2	Replacement 2 position terminal block connector for the OM-CP-QUADVOLT-2.5V, OM-CP-QUADVOLT-15V and OM-CP-QUADVOLT-30V
OM-CP-CONNECTOR-3	Replacement 3 position terminal block connector for the OM-CP-QUADVOLT100MV

Comes complete with 9V lithium battery.

Operator's manual and USB interface cable are included with the **OM-CP-IFC200** Windows software (software sold separately).

To order data loggers with optional 120 Vac power, add suffix "-AC" to model number for additional cost.

Ordering Example: OM-CP-QUADVOLT-CERT 4-channel voltage data logger with NIST calibration certificate and OM-CP-IFC200 Windows software and USB interface cable.

omega.co.uk®

Your One-Stop Source for Process Measurement and Control!

Freephone 0800 488 488 | International +44(0) 161 777 6622 | Fax +44(0) 161 777 6622 | Sales@omega.co.uk

www.omega.co.uk



UNITED STATES

www.omega.com

1-800-TC-OMEGA
Stamford, CT.

CANADA

www.omega.ca

Laval(Quebec)
1-800-TC-OMEGA

GERMANY

www.omega.de

Deckenpfronn, Germany
0800-8266342

UNITED KINGDOM

www.omega.co.uk

Manchester, England
0800-488-488
+44-(0)161-777-6611

FRANCE

www.omega.fr

0800-466-342

BENELUX

www.omega.nl

0800-099-33-44



More than 100,000 Products Available!

• Temperature

Calibrators, Connectors, General Test and Measurement Instruments, Handheld Instruments for Temperature Measurement, Ice Point References, Indicating Labels, Crayons, Cements and Lacquers, Infrared Temperature Measurement Instruments, Recorders, Relative Humidity Measurement Instruments, PT100 Probes, PT100 Elements, Temperature & Process Meters, Timers and Counters, Temperature and Process Controllers and Power Switching Devices, Thermistor Elements, Probes and Assemblies, Thermocouples, Thermowells and Head and Well Assemblies, Transmitters, Thermocouple Wire, RTD Probes

• Flow and Level

Air Velocity Indicators, Doppler Flowmeters, Level Measurement, Magnetic Flowmeters, Mass Flowmeters, Pitot Tubes, Pumps, Rotameters, Turbine and Paddle Wheel Flowmeters, Ultrasonic Flowmeters, Valves, Variable Area Flowmeters, Vortex Shedding Flowmeters

• pH and Conductivity

Conductivity Instrumentation, Dissolved Oxygen Instrumentation, Environmental Instrumentation, pH Electrodes and Instruments, Water and Soil Analysis Instrumentation

• Data Acquisition

Communication Products and Converters, Data Acquisition and Analysis Software, Data Loggers, Plug-in Cards, Signal Conditioners, USB, RS232, RS485, Ethernet and Parallel Port Data Acquisition Systems, Wireless Transmitters and Receivers

• Pressure, Strain and Force

Displacement Transducers, Dynamic Measurement Force Sensors, Instrumentation for Pressure and Strain Measurements, Load Cells, Pressure Gauges, Pressure Reference Section, Pressure Switches, Pressure Transducers, Proximity Transducers, Regulators, Pressure Transmitters, Strain Gauges, Torque Transducers, Valves

• Heaters

Band Heaters, Cartridge Heaters, Circulation Heaters, Comfort Heaters, Controllers, Meters and Switching Devices, Flexible Heaters, General Test and Measurement Instruments, Heater Hook-up Wire, Heating Cable Systems, Immersion Heaters, Process Air and Duct, Heaters, Radiant Heaters, Strip Heaters, Tubular Heaters