

Bottom Mounting Plates

for LCM1001/LCM1011 Series Load Cells

Alloy Steel or 17-4 PH Stainless Steel

LCM1000-BP4

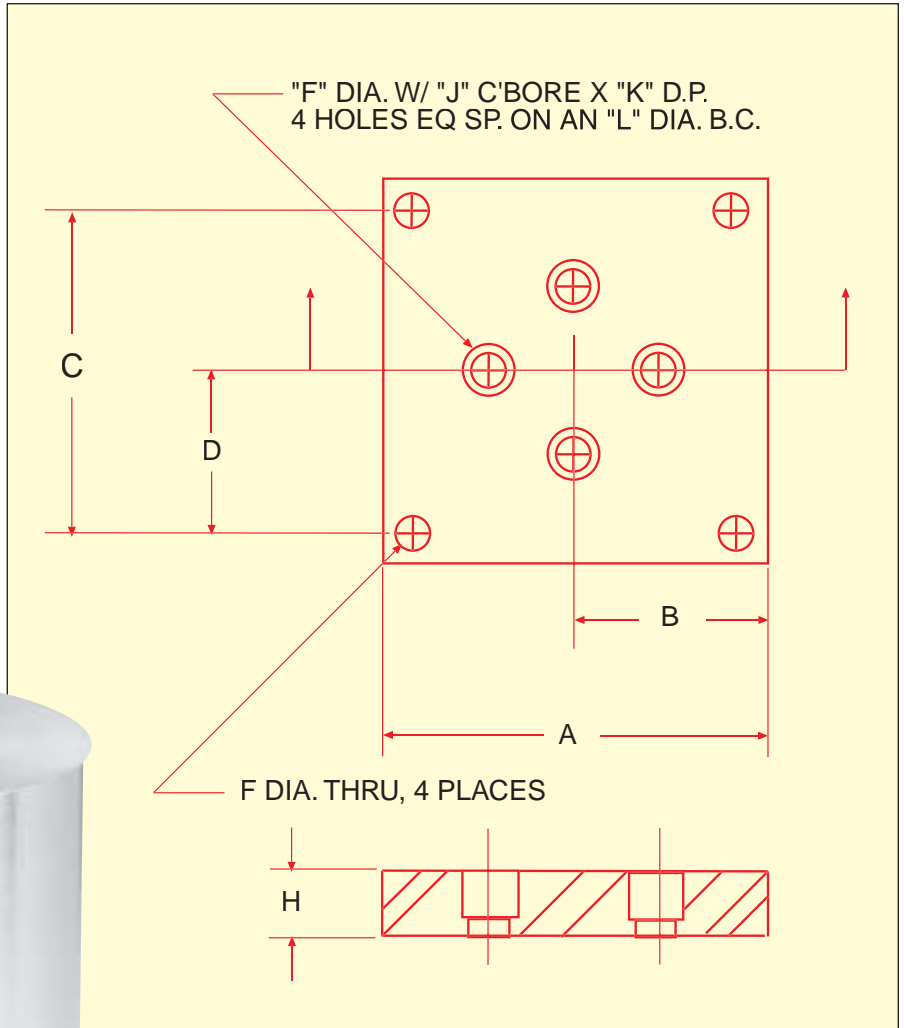
£39⁵⁰



LCM1000 Series
Mounting Plates For Ranges
0-250 to 0-25,000 kgF

1 Newton = 0.2248 lb
 1 daNewton = 10 Newtons
 1 lb = 454 g
 1 t = 1000 kg = 2204 lb

LCM1011 Series
 Load Cell
 Shown
 Smaller
 Than
 Actual
 Size



BOTTOM PLATES for LCM1001/LCM1011 Load Cells



| To Order (Specify Model Number) | | | | | Dimensions in mm (inches) | | | | | | | | | |
|---------------------------------|--------------|--------|-----------------|-------|---------------------------|--------------|--------------|--------------|-------------|--------------|--------------|--------------|--------------|--|
| Capacity kgF | Plated Steel | Price | Stainless Steel | Price | A | B | C | D | F | H | J | K | L | |
| 250-25,000 | LCM1000-BP4 | £39.50 | LCM1000-BP4-SS | £66 | 114 (4.50) | 57 (2.25) | 95 (3.75) | 46 (1.88) | 10 (.41) | 19 (.750) | 16 (.625) | 15 (0.59) | 60 (2.38) | |

Ordering Examples:

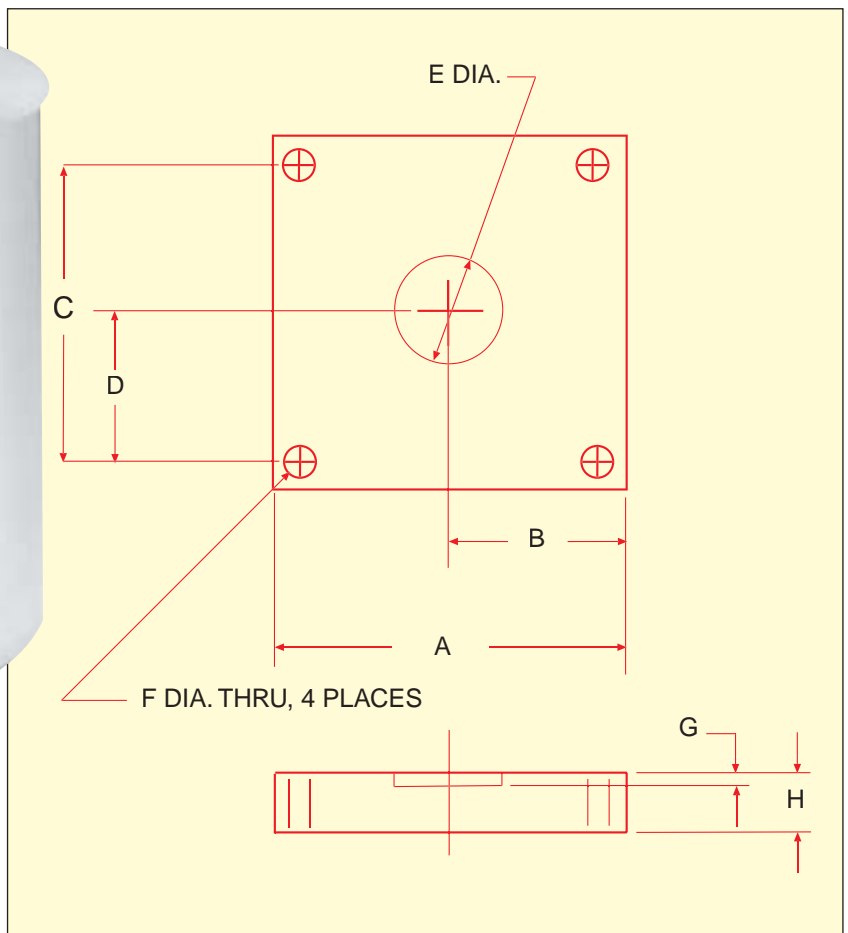
- 1.) LCM1000-BP4-SS is a Stainless Steel Base Plate for Model LCM1001& LCM1011 load cells from 250 to 25,000 kgF range, £66
- 2.) LCM1000-BP4 is a Plated Steel Base Plate for Model LCM1001& LCM1011 load cells from 250 to 25,000 kgF range, £39.50

Top Mounting Plates for LCM1001/LCM1011 Series Load Cells Nickel Plated Steel or 17-4 pH Stainless Steel

LCM1000 Series
Mounting Plates For
Ranges 250 to 25,000 kgF

1 Newton = 0.2248 lb
 1 daNewton = 10 Newtons
 1 lb = 454 g
 1 t = 1000 kg = 2204 lb

MODEL LCM1011
 Shown Smaller
 Than
 Actual
 Size



TOP PLATES for LCM1001/LCM1011 Load Cells

LCM1000-TP4
£39⁵⁰



| To Order (Specify Model Number) | | | | | Dimensions in mm (inches) | | | | | | | | |
|---------------------------------|-----------------|--------|-----------------|-------|---------------------------|--------------|--------------|--------------|--------------|-------------|---------------|--------------|--|
| Capacity kgF | Ni Plated Steel | Price | Stainless Steel | Price | A | B | C | D | E | F | G | H | |
| 250-25,000 | LCM1000-TP4 | £39.50 | LCM1000-TP4-SS | £66 | 114 (4.50) | 57 (2.25) | 95 (3.75) | 46 (1.88) | 38 (1.50) | 10 (.41) | 3.2 (.125) | 19 (0.75) | |

Ordering Examples:

1) LCM1000-TP4-SS is a Stainless Steel Top Plate for Model LC1001/LC1011 load cells from 250 to 25,000 kgF range, £66

