

HIGH-ACCURACY, LOW-PROFILE LOAD CELLS—PANCAKE STYLE FOR INDUSTRIAL WEIGHING APPLICATIONS

**Models Available
with Built-In
Amplifiers!
See Next Page**

LCM402/LCM412 Series

Tension/Compression

LCM402 (Cable Style)

LCM412 (Connector Style)

25 kgf to 10,000 kgf

1 Newton = 0.2248 lb

1 kgf = 10 Newtons

1 kg = 2.204 lb

1 t = 1000 kg = 2204 lb



Starts at
£489



PT06F10-6S,
mating connector,
£17.75, required.

LCM412-1K, £489,
shown actual size.

- ✓ All Stainless Steel
for Harsh Industrial
Applications
- ✓ 0.25% Interchangeability
for Multiple Load Cell
Applications
- ✓ 5-Point Calibration
Provided
- ✓ Easy-to-Use Twist-Lock
Connection

SPECIFICATIONS

Excitation: 10 Vdc (15 Vdc max)

Output: 3 mV/V $\pm 0.25\%$

5-Point Calibration (in Compression):

0%, 50%, 100%, 50%, 0%
(units ordered with optional tension plate
are calibrated in tension)

Linearity: 0.10% FSO

Hysteresis: 0.10% FSO

Repeatability: 0.05% FSO

Zero Balance: $\pm 1\%$ FSO

Agency Approval: FM Intrinsically Safe
IS/I.II.III/1/CDEFG

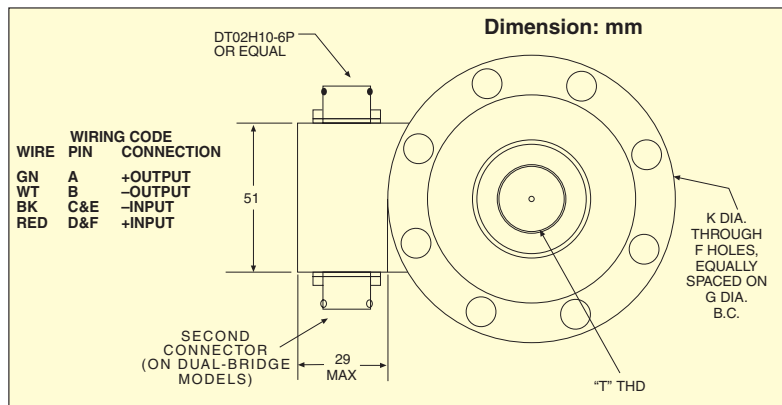
Operating Temp Range:

LCM402: -54 to 107°C

LCM412: -54 to 121°C

Compensated Temp Range:

16 to 71°C



Thermal Effects:

Zero: 0.0045% FSO/°C

Span: 0.0045% FSO/°C

Safe Overload: 150% of capacity

Ultimate Overload: 300% of capacity

Bridge Resistance: 350 ± 10

FS Deflection: 0.025 to 0.075 mm typical

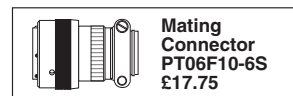
Construction: 17-4 PH stainless steel

Electrical Connection:

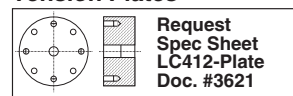
LCM402: 4.8 m 4-conductor
screened cable

LC412: DT02H-10-6P connector
(or equivalent)

Mating Connector: PT06F10-6S,
£17.75 (not included)



Tension Plates

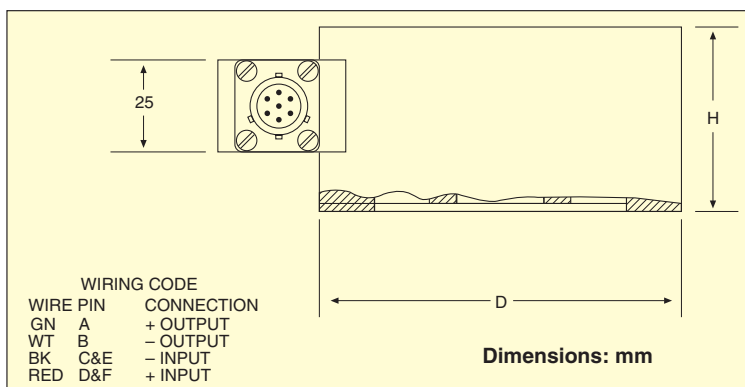


PRESSURE, STRAIN AND FORCE

HIGH-ACCURACY, LOW-PROFILE LOAD CELLS

POPULAR OPTIONS

0 to 5 Vdc Output	"5V"	£117.00
(Call for compatibilities)		
Overload Stops:	"-OL"	Consult Sales
Dual Bridge:		
2500 kg	"-DUAL"	168.00
>2500 kg	"-DUAL"	235.00
Extended Temperature Range:		
-45 to 93°C	"-TC1"	33.50
-45 to 177°C	"-TC2"	151.00
Watertight Cable Exit:	"-WTC"	84.00
Additional Cable Length:		6.50/m



Dimensions: mm

CAPACITY (kgf)	DIA	HEIGHT	F	G	K	T	WEIGHT kg
25 to 100	76	38	8	57	6.7	M10 x 1.5	1.1
250 to 1500	89	38	8	73	6.7	M12 x 1.75	1.4
2.5 K to 5 K	95	38	8	83	6.7	M20 x 1.5	2.3
7.5 K to 10 K	102	51	8	89	10.3	M24 x 2.0	3.4

MOST POPULAR MODELS HIGHLIGHTED!

To Order (Specify Model Number)						TENSION BASE PLATE	
CAPACITY kgf	lbf	CABLE MODEL NO.	CONNECTOR MODEL NO.	PRICE	COMPATIBLE METERS*	MODEL NO.	PRICE
25	55	LCM402-25	LCM412-25	£489	DP41-B, DP41-S, DP25B-S	LCM412-TP225	£74
50	110	LCM402-50	LCM412-50	489	DP41-B, DP41-S, DP25B-S	LCM412-TP225	74
100	220	LCM402-100	LCM412-100	489	DP41-B, DP41-S, DP25B-S	LCM412-TP225	74
250	551	LCM402-250	LCM412-250	489	DP41-B, DP41-S, DP25B-S	LCM412-TP288	74
500	1102	LCM402-500	LCM412-500	489	DP41-B, DP41-S, DP25B-S	LCM412-TP288	74
1000	2205	LCM402-1K	LCM412-1K	489	DP41-B, DP41-S, DP25B-S	LCM412-TP288	74
1500	3307	LCM402-1.5K	LCM412-1.5K	489	DP41-B, DP41-S, DP25B-S	LCM412-TP288	74
2500	5512	LCM402-2.5K	LCM412-2.5K	489	DP41-B, DP41-S, DP25B-S	LCM412-TP325	74
5000	11,023	LCM402-5K	LCM412-5K	665	DP41-B, DP41-S, DP25B-S	LCM412-TP325	74
7500	16,535	LCM402-7.5K	LCM412-7.5K	665	DP41-B, DP41-S, DP25B-S	LCM412-TP350	168
10000	22,046	LCM402-10K	LCM412-10K	665	DP41-B, DP41-S, DP25B-S**	LCM412-TP350	168

Comes with 5-point traceable calibration.

* 4-digit meter. ** See page 291 for compatible meters.

To order dual-bridge models, add suffix **"-DUAL"** to model number and **£168** for 5000 lb, **£235** for >5000 lb.

Ordering Examples: LCM412-1K required 2500 kgf capacity connector-style load cell, £489, PT06F10-6S, mating connector, 2.5 K required (not included), £17.75 ea. LCM412-TP325, optional tension plate, £74. LCM402-100, 100 kgf capacity cable-style load cell, £489. LCM412-TP225, optional tension plate, £74.

ACCESSORY

MODEL NO.	PRICE	DESCRIPTION
ME-1804	£84	Reference Book: Mechanical Design Handbook



omega.co.uk®

Your One-Stop Source for Process Measurement and Control!

Freephone 0800 488 488 | International +44(0) 161 777 6622 | Fax +44(0) 161 777 6622 | Sales@omega.co.uk

www.omega.co.uk



UNITED STATES

www.omega.com
1-800-TC-OMEGA
Stamford, CT.

CANADA

www.omega.ca
Laval(Quebec)
1-800-TC-OMEGA

GERMANY

www.omega.de
Deckenpfronn, Germany
0800-8266342

UNITED KINGDOM

www.omega.co.uk
Manchester, England
0800-488-488

FRANCE

www.omega.fr
088-466-342

CZECH REPUBLIC

www.omegaeng.cz
Karviná, Czech Republic
596-311-899

BENELUX

www.omega.nl
0800-099-33-44



More than 100,000 Products Available!

• Temperature

Calibrators, Connectors, General Test and Measurement Instruments, Handheld Instruments for Temperature Measurement, Ice Point References, Indicating Labels, Crayons, Cements and Lacquers, Infrared Temperature Measurement Instruments, Recorders, Relative Humidity Measurement Instruments, PT100 Probes, PT100 Elements, Temperature & Process Meters, Timers and Counters, Temperature and Process Controllers and Power Switching Devices, Thermistor Elements, Probes and Assemblies, Thermocouples, Thermowells and Head and Well Assemblies, Transmitters, Thermocouple Wire, RTD Probes

• Flow and Level

Air Velocity Indicators, Doppler Flowmeters, Level Measurement, Magnetic Flowmeters, Mass Flowmeters, Pitot Tubes, Pumps, Rotameters, Turbine and Paddle Wheel Flowmeters, Ultrasonic Flowmeters, Valves, Variable Area Flowmeters, Vortex Shedding Flowmeters

• pH and Conductivity

Conductivity Instrumentation, Dissolved Oxygen Instrumentation, Environmental Instrumentation, pH Electrodes and Instruments, Water and Soil Analysis Instrumentation

• Data Acquisition

Auto-Dialers and Alarm Monitoring Systems, Communication Products and Converters, Data Acquisition and Analysis Software, Data Loggers Plug-in Cards, Signal Conditioners, USB, RS232, RS485 and Parallel Port Data Acquisition Systems, Wireless Transmitters and Receivers

• Pressure, Strain and Force

Displacement Transducers, Dynamic Measurement Force Sensors, Instrumentation for Pressure and Strain Measurements, Load Cells, Pressure Gauges, Pressure Reference Section, Pressure Switches, Pressure Transducers, Proximity Transducers, Regulators, Pressure Transmitters, Strain Gauges, Torque Transducers, Valves

• Heaters

Band Heaters, Cartridge Heaters, Circulation Heaters, Comfort Heaters, Controllers, Meters and Switching Devices, Flexible Heaters, General Test and Measurement Instruments, Heater Hook-up Wire, Heating Cable Systems, Immersion Heaters, Process Air and Duct, Heaters, Radiant Heaters, Strip Heaters, Tubular Heaters