

Economical 6- or 12-Zone 1/4 DIN Temperature Monitors

CN606 Series



*Not offered with DC power option.

- ✓ User Programmable
- ✓ Hi, Lo or Hi/Lo Alarms
- ✓ Password Protected
- ✓ Adjustable Scan Time
- ✓ Programmable °C or °F Display
- ✓ Zone Activation
- ✓ Thermocouple Types (J, K, E, T, S, R, B, C)
- ✓ RTD (2- or 3-wire)
- ✓ Front Panel Calibration
- ✓ Latching or Non-Latching Alarm
- ✓ RS232 Communications and Software

The CN600 Series are microprocessor-based scanners which accept signals from up to 12 thermocouples or RTD's. Each zone is sequentially scanned and active zones are displayed. Individual zones can be locked for monitoring. Each instrument is programmable to meet the operator's needs for thermocouple types, degree scale, latching or non-latching, and high, low or high/low alarms. Memory and setpoints are retained when power is off.

The RS232 program can monitor up to 10 units. All CN600 Series scanners have RS232, 3-wire serial communications. Up to 10 scanners can be daisy-chained together. Line voltage is 120 or 240 Vac selectable by external jumper assembly. On the back of the instrument are easy-to-use screw terminal connections.

The CN600 Series implements a security password to protect settings. The password can be enabled or disabled on the front panel and changed via RS232.



CN606TC2 shown smaller than actual size.

Panel Punches Available, Visit omega.com/panelpunches



OMEGACARESM extended warranty program is available for models shown on this page. OMEGACARESM covers parts, labor, and equivalent loaners.

Calibration is performed from the front panel and is separately password protected. Higher level passwords are available.

The instrument mounts in a 1/4 DIN panel cutout and is secured by slide brackets. It does not have to be removed from its housing to be mounted. The instrument is housed in a 1/4 DIN aluminum box.

Optional models available are 6-zone thermocouple with output cards, 12-zone thermocouple, 6-zone RTD or 12-zone RTD.

A single output relay is provided to indicate an alarm condition on any zone. The instrument shows an alarm condition by flashing the main temperature display while indicating the zone in alarm with a flashing zone number display. The alarm automatically shuts itself off when the condition changes in the non-latching setting and is manually reset in the latching setting.

There are 2 modes the monitor can be set for: "RUN" and "FUNCTION SELECT". "RUN" is the basic operating mode. "FUNCTION SELECT" is the password protected settings selection and control mode.

1 of 10 Functions Can be Selected:

- ✓ "RUN" MODE
- ✓ "FUNCTION SELECT"
- ✓ Select Active Zones
- ✓ Set "LO" Setpoint
- ✓ Set "HI" Setpoint
- ✓ Serial Number
- ✓ Set Scan Time
- ✓ Select Model
- ✓ Password Enable
- ✓ Calibration

Specifications

No. of Zones: 6 standard/12 expanded

Display Time Adjust: 1 to 40 seconds

Scan Time: Approx. 1/4 s for 6-zone, 1/2 s for 12-zone

Input Ranges: See chart below

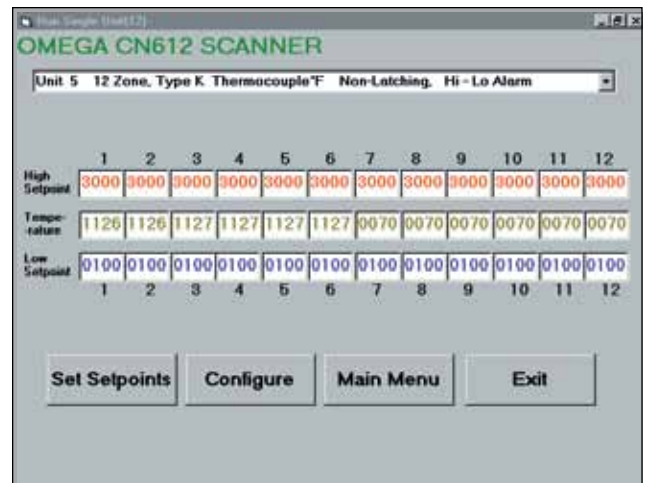
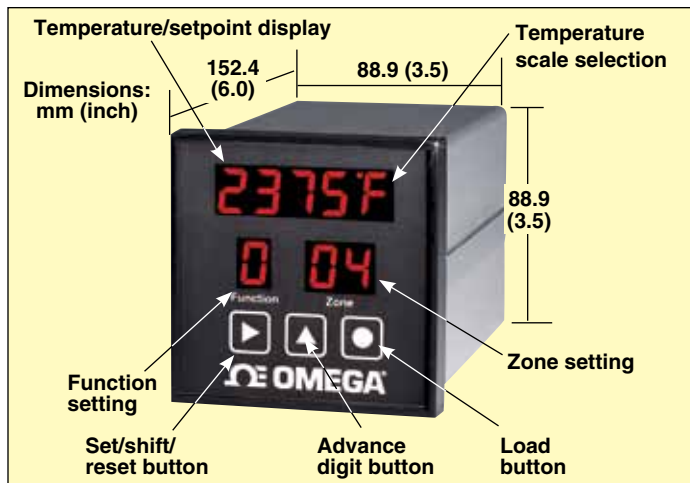
Accuracy: ±0.1% range

Resolution: 1°C or °F

Thermocouple Type: J, K, E, T, S, R, B, C

Cold-Junction Compensation: Automatic

Linearity: ±1°C



Scale Selectable: °C or °F
Open Thermocouple Warning: Flashing display
RTD (2- or 3-Wire): 100 Ω Pt, 120 Ω Ni, 10 Ω Cu
Line Power: 120/240 Vac; 50/60 Hz, 9 to 36 Vdc optional
Note: CE and UL ratings are not available on the dc power option
Power Consumption: 10 VA max
Alarm Relay, 5 A: 120 Vac, relay de-energizes on alarm
Communication: RS232 (3-wire)
Alarms Selectable—High, Low and High/Low: Latching or non-latching
Alarm Range: Full range
RS232 Communications: Single-drop
Baud Rate: 4800
Data Bits: 8
Parity: N
Stop: 1
Protocols:
 ASCII Line, Computer Interface
Communications Software: Windows compatible, included with unit
Capability: Up to 10 scanners can be daisy-chained; to avoid cross-talk between scanners, the transmission line is held in tristate except when the computer addresses a specific scanner for communication
Terminals: Headers for plug-in wiring
Panel Cutout: ¼ DIN 92 x 92 mm (3.62 x 3.62")
Dimensions: 95.3 x 95.3 mm (3.75 x 3.75") front face
Weight: 1.36 kg (3 lb)
Enclosure: ¼ DIN aluminum, 152.4 mm L (6")
Storage Temperature: 0 to 85°C (32 to 185°F)
Operating Temperature: 0 to 55°C (32 to 131°F)
Reset: Manual
Max Voltage Between Inputs: 6 Vdc or RMS
Reaction to Power Loss: Unit returns to "RUN MODE"
Main Display: 4-Digit; 15 mm H (0.6")

Input Ranges

RS232 sample screen

Thermocouple Input Type	Standard Range (TC1)	Extended Range (TC2)
J Iron–Constantan	0 to 700°C (32 to 1300°F)	
K CHROME [®] GA–ALOME [®] GA	0 to 1000°C (32 to 1800°F)	0 to 1250°C (32 to 2282°F)
T Copper–Constantan	0 to 400°C (32 to 750°F)	
E CHROME [®] GA–Constantan	0 to 550°C (32 to 1000°F)	0 to 900°C (32 to 1652°F)
R Pt/13% Rh–Pt	0 to 1750°C (32 to 3200°F)	
S Pt/10% Rh–Pt	0 to 1750°C (32 to 3200°F)	
B Pt/30% Rh–Pt/6% Rh	0 to 1800°C (32 to 3300°F)	
C W/5% Re–W/26% Re	0 to 2300°C (32 to 4200°F)	
RTD Input Type		Range
RTD	100 Ω Pt	0 to 850°C (32 to 1500°F)
	120 Ω Ni	0 to 300°C (32 to 580°F)
	10 Ω Cu (Special Order)	0 to 250°C (32 to 480°F)

To Order Visit omega.com/cn606_612 for Pricing and Details

Scanner with 5 A Mechanical Relay Output

Model Number	Zones	Description
CN606TC1	6	Thermocouple input
CN606TC2	6	Thermocouple input with extended range
CN606RTD2	6	RTD (2-wire) input
CN612RTD2	12	RTD (2-wire) input
CN606RTD3	6	RTD (3-wire) input
CN612TC1	12	Thermocouple input
CN612TC2	12	Thermocouple input with extended range

Scanner with Open Collector Option

CN606TC1-OC	6	Thermocouple input
CN606TC2-OC	6	Thermocouple input with extended range
CN606RTD2-OC	6	RTD (2-wire) input

Comes complete with software and operator's manual.

For 9 to 36 Vdc input power, add suffix "**-DC**" to model number, no additional cost.

Note: CE and UL ratings are not available with dc power option.

Ordering Examples: **CN606TC2**, six zone thermocouple input scanner with extended range.

OCW-3, OMEGACARESM extends standard 2-year warranty to a total of 5 years.

CN612RTC1, twelve zone thermocouple input scanner.

Accessory

Model No.	Description
DPP-6	¼ DIN panel punch

omega.co.uk®

Your One-Stop Source for Process Measurement and Control!

Freephone 0800 488 488 | International +44(0) 161 777 6622 | Fax +44(0) 161 777 6622 | Sales@omega.co.uk

www.omega.co.uk



UNITED STATES

www.omega.com

1-800-TC-OMEGA
Stamford, CT.

CANADA

www.omega.ca

Laval(Quebec)
1-800-TC-OMEGA

GERMANY

www.omega.de

Deckenpfronn, Germany
0800-8266342

UNITED KINGDOM

www.omega.co.uk

Manchester, England
0800-488-488
+44-(0)161-777-6611

FRANCE

www.omega.fr

0800-466-342

BENELUX

www.omega.nl

0800-099-33-44



More than 100,000 Products Available!

• Temperature

Calibrators, Connectors, General Test and Measurement Instruments, Handheld Instruments for Temperature Measurement, Ice Point References, Indicating Labels, Crayons, Cements and Lacquers, Infrared Temperature Measurement Instruments, Recorders, Relative Humidity Measurement Instruments, PT100 Probes, PT100 Elements, Temperature & Process Meters, Timers and Counters, Temperature and Process Controllers and Power Switching Devices, Thermistor Elements, Probes and Assemblies, Thermocouples, Thermowells and Head and Well Assemblies, Transmitters, Thermocouple Wire, RTD Probes

• Flow and Level

Air Velocity Indicators, Doppler Flowmeters, Level Measurement, Magnetic Flowmeters, Mass Flowmeters, Pitot Tubes, Pumps, Rotameters, Turbine and Paddle Wheel Flowmeters, Ultrasonic Flowmeters, Valves, Variable Area Flowmeters, Vortex Shedding Flowmeters

• pH and Conductivity

Conductivity Instrumentation, Dissolved Oxygen Instrumentation, Environmental Instrumentation, pH Electrodes and Instruments, Water and Soil Analysis Instrumentation

• Data Acquisition

Communication Products and Converters, Data Acquisition and Analysis Software, Data Loggers, Plug-in Cards, Signal Conditioners, USB, RS232, RS485, Ethernet and Parallel Port Data Acquisition Systems, Wireless Transmitters and Receivers

• Pressure, Strain and Force

Displacement Transducers, Dynamic Measurement Force Sensors, Instrumentation for Pressure and Strain Measurements, Load Cells, Pressure Gauges, Pressure Reference Section, Pressure Switches, Pressure Transducers, Proximity Transducers, Regulators, Pressure Transmitters, Strain Gauges, Torque Transducers, Valves

• Heaters

Band Heaters, Cartridge Heaters, Circulation Heaters, Comfort Heaters, Controllers, Meters and Switching Devices, Flexible Heaters, General Test and Measurement Instruments, Heater Hook-up Wire, Heating Cable Systems, Immersion Heaters, Process Air and Duct, Heaters, Radiant Heaters, Strip Heaters, Tubular Heaters