

# 1- or 2-Channel Circular Recorders

## CT5100 Series



Optional†

- ✓ 254 mm (10") Chart
- ✓ 1- or 2-Pen Versions
- ✓ Programmable Inputs: Thermocouple, RTD, DC Current, or Voltage
- ✓ 4-Digit, 14 mm H (0.56") LED Display

CT5100 Series circular chart recorders can measure and display up to 2 process variables. Choose from a variety of programmable inputs. All recorder and alarm functions are easily configured with the 3 front-panel keys. Required panel depth is only 64 mm (2.5"), with only a 33 mm (1.3") protrusion.

## Specifications

### Inputs:

#### Input Types/Range:

**Thermocouple:** J, K, T, R, S

**RTD:** 100  $\Omega$  platinum, 0.00385  $\Omega/\Omega/^{\circ}\text{C}$

**DC Current:** 0 to 20 mA, 4 to 20 mA; internal 4.7  $\Omega$  shunt resistor

**DC Voltage:** 0 to 25 mV, 0 to 50 mV, 10 to 50 mV, 0 to 5 V, 1 to 5 V

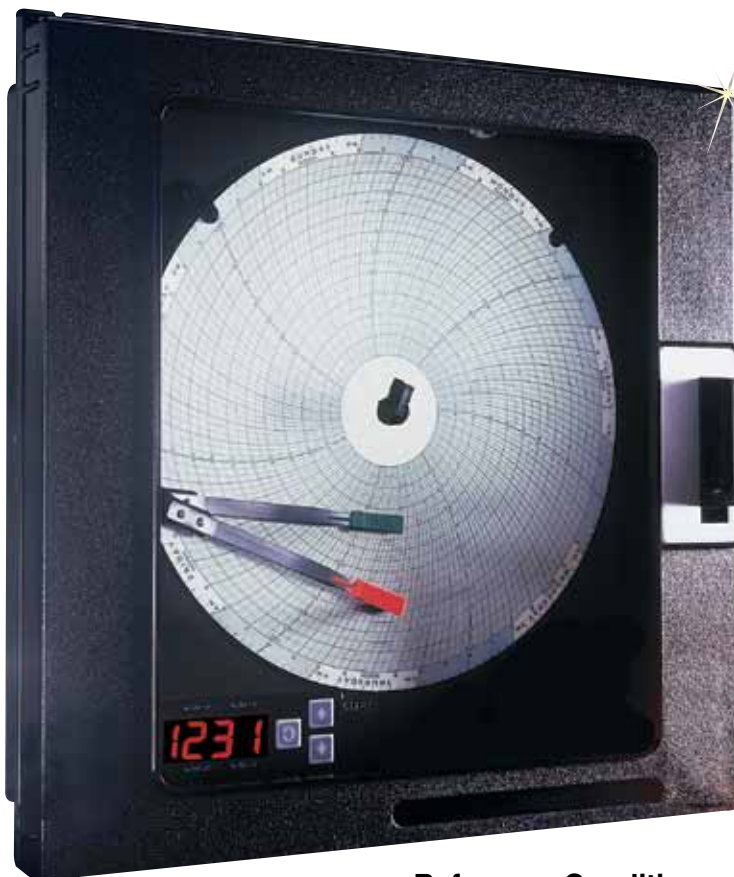
**Impedance:** >100 M $\Omega$  for T/C and mV inputs, 100 k $\Omega$  for 5 V inputs, 4.7  $\Omega$  for  $\mu\text{A}$  inputs

**RTD Excitation Current:** 150  $\mu\text{A}$ , typical

**Input Scan Rate:** 1 scan per second for non-RTD inputs; 1 scan per 1.2 seconds for RTD inputs

**Input Correction:** Offset adjustment: 999 to 999 units

**Sensor Fault Detection:** Display goes to "SnSr" and pen goes up-scale if a sensor break is detected. No sensor break can be detected for zero-based volt and milliamp ranges. Display goes to "Hi" 10% above span; display goes to "Lo" 10% below span or zero, whichever is higher.



CT5110 shown smaller than actual size.

### Input Performance

#### Under Reference Conditions:

##### Measurement Error:

Type J, K, T, R, S and RTD:  $\pm 0.25\%$  of span  $\pm 1$  degree; mA, mV and Vdc:  $\pm 0.25\%$  of scaled span plus 1 least-significant digit

**Cold-Junction Compensation Error:**  $\pm 0.2^{\circ}\text{C}$  @  $25^{\circ}\text{C}$  ( $\pm 0.36^{\circ}\text{F}$  @  $77^{\circ}\text{F}$ )

**Cold-Junction Compensation Rejection:** 0.04 $^{\circ}\text{C}$  deviation from  $25^{\circ}\text{C}$  (0.07 $^{\circ}\text{F}$  from  $77^{\circ}\text{F}$ )

**Linearization Error:** T/Cs:  $\pm 0.25^{\circ}\text{C}$  (0.45 $^{\circ}\text{F}$ ) typical,  $\pm 0.5^{\circ}\text{C}$  (0.9 $^{\circ}\text{F}$ ) worst case

RTDs:  $\pm 0.1^{\circ}\text{C}$  (0.18 $^{\circ}\text{F}$ ) typical,  $\pm 0.3^{\circ}\text{C}$  (0.54 $^{\circ}\text{F}$ ) worst case

**Ambient Temperature Error:**  $\pm 0.01\%$  of span per  $^{\circ}\text{C}$  (1.8 $^{\circ}\text{F}$ ) deviation from  $25^{\circ}\text{C}$  (77 $^{\circ}\text{F}$ )

**Common Mode Rejection:** >120 dB @ 50/60 Hz, 260 Vac max.

**Normal Mode Rejection:** 85 db minimum @ 60 Hz or greater

**Isolation:** 350 Vac, 500 Vdc; inputs share a common signal ground

## Reference Conditions:

**Ambient Temperature:**  $25^{\circ}\text{C}$  (77 $^{\circ}\text{F}$ )

**Relative Humidity:** 60 to 70% RH

**Supply Voltage:** 115 Vac, 60 Hz

**Source Resistance:**

<10  $\Omega$  for T/C input

**Lead Resistance:** <0.1  $\Omega$  (Pt100)

## Recording:

**Pen Type:** Disposable fiber tip

**Pen Color:** Pen 1—red; pen 2—green

**Chart Size:** 254 mm D (10")

**Chart Drive:** Stepper motor

**Chart Rotation:** User configurable: 8 hours, 12 hours, 24 hours, 48 hours or 7 days

**Chart Span:** Bottom and top of span, -9999 to 9999 units

## Recording Performance:

**Chart Recording Accuracy:**

0.5% of chart span reference accuracy

**Chart Rotation Accuracy:**

$\pm 0.5\%$  of rotation time, assuming all backlash removed

## Operator Interface

**Display:** 4-digit, 14 mm H (0.56"), red, 7-segment, LED display

**Status Indicators:** 5 red LED alarm status indicators, 1 green LED pen 2 indicator

†Refer to footnote on next page for CE ordering information.

## Ranges

Sensor Type	Sensor Specs	Code	Reference Range °C	Reference Range °F
T/C	Iron-constantan	J	0 to 760	0 to 1400
	CHROMECA®-ALOMEGA®	K	0 to 1360	0 to 2500
	Copper-constantan	T	-200 to 400	-330 to 752
	Platinum 13% rhodium-platinum	R	200 to 1650	400 to 3000
	Platinum 10% rhodium-platinum	S	200 to 1650	400 to 3000
RTD	100 Ω platinum, 0.00385 Ω/Ω/°C	Pt100	-140 to 400	-220 to 752

**Keypad:** 3 keys for programming and unit operation

**Display Modes:** Normal: process value(s) or blank

### Alarms

**Number:** Up to 2 process alarms for each of 2 inputs

**Type:** Process high or low

**Limit Device:** Optional high/low limits for each input with latching output; normally open output latches open; red reset button to the right of the display

**Hysteresis:** Fully adjustable, 0 to 200 units, single sided

**Security:** Alarm setpoint changes can be prohibited

**Sensor Fault Action:** Alarm works normally in "Hi" and "Lo" conditions; alarm relays are de-energized in a "SnSr" sensor break condition

### Relay Outputs:

**Relays:** SPDT; contacts rated 5 A resistive @ 115 Vac, 2.5 A resistive @ 230 Vac, ½ hp @ 230 Vac (single phase), 250 VA @ 115/230 Vac

### Power Requirements:

**Line Voltage:** 90/264 Vac, 50/60 Hz; optional: 20 to 50 Vac, 50/60 Hz, or 22 to 65 Vdc

**Power Consumption:** 18 VA max

### Construction:

**Enclosure:** Injection-molded Noryl® case and cover with acrylic window

**NEMA Rating:** NEMA 3 (IP54)

**Conduit Openings:** 3 openings on the right side

**Mounting:** Panel or wall

**Overall Dimensions:** 355.6 W x 355.6 H x 96.5 mm D (14 x 14 x 3.8")

**Panel Cutout:** 322.58 W x 322.58 mm H (12.7 x 12.7")

**Panel Depth:** 64 mm (2.5")

**Panel Protrusion:** 33 mm (1.3")

**Weight:** 8.8 kg (15 lb) max

**Retrofit:** With adaptor plate, will fit CT7000 cutout



OMEGACARE<sup>SM</sup> extended warranty program is available for models shown on this page. Ask your sales representative for full details when placing an order. OMEGACARE<sup>SM</sup> covers parts, labor and equivalent loaners.



CT5100 shown smaller than actual size.

### Environmental and Operating Conditions:

**Operating Temperature:** 0 to 50°C (32 to 122°F)

**Storage Temperature:** -40 to 65°C (-4 to 149°F)

**Humidity:** 10 to 90% RH, non-condensing

### General Reference Data:

**Data Backup:** EEPROM for configuration parameters and calibration data; EEPROM for alarm setpoints

### Approvals and Compliance:

#### Safety:

**UL Approved for USA:** UL 1092, UL 916 and QUXY, pending  
**UL Certified for Canada:** CSA Spec 142, pending  
**Limit/Device:** FM, pending

### Accessories

Model No.	Description
CT7000-GREEN	Green pens, pkg. of 5, channel 2 only
CT7000-RED	Red pens, pkg. of 5, channel 1 only
CT7000C-0-100/24	Circular paper, 100 qty., 24-hr
CT7000C-0-100/7	Circular paper, 100 qty., 7-day
CT7000C-0-300/24	Circular paper, 100 qty., 24-hr
CT7000C-0-300/7	Circular paper, 100 qty., 7-day
CT7000C-0-2500/24	Circular paper, 100 qty., 24-hr
CT7000C-GENERIC/24HR	Circular paper, 100 qty., 24-hr

**Note:** Other ranges available. Consult Sales for details.

### To Order Visit [omega.com/ct5100](http://omega.com/ct5100) for Pricing and Details

Model No.	Description
CT5100	1-pen recorder
CT5101	1-pen recorder with 1 alarm relay
CT5102	1-pen recorder with 2 alarm relays
CT5100-LOCK	1-pen recorder with door lock
CT5110	2-pen recorder
CT5112	2-pen recorder with 1 alarm relay per channel
CT5114	2-pen recorder with 2 alarm relays per channel
CT5110-LOCK	2-pen recorder with door lock

Comes complete with package of paper, 1 pen per channel and operator's manual. For transmitter power supply, add "-XPS" to model number.

To order CE approval, add suffix "-CE" to model number.

**Ordering Examples:** CT5100, 1-pen recorder and CT7000C-0-100/7, 100 sheets of chart paper.

CT5102, 1-pen recorder with 2 alarm relays.

OCW-1 OMEGACARE<sup>SM</sup> extends standard 2-year warranty to a total of 3 years.